



# SYS300

CINEMA SCREEN CHANNEL SPEAKER SYSTEM

SLS AUDIO A DIVISION OF DOLBY LABORATORIES 1650 W. JACKSON OZARK, MO 65721 417-323-7000

## TECH DATA SHEET



### Specifications/SYS300\*

(1) CS300MH & (1) CSB215

Operating Range	40Hz to 20kHz
Sensitivity (1W@1M) <sup>1</sup>	99dB
Horizontal Coverage -6dB <sup>2</sup>	80degs
Vertical Coverage -6dB <sup>2</sup>	40degs
Power Handling <sup>3</sup>	
Low	800W RMS (56.6V) AES/2
Mid/High	300W RMS (49V) AES/2
Recommended Amplifier	
Low	1600W @ 4 Ohms
Mid/Hi	900W @ 8 Ohms
Max SPL (calculated) 1M	128dB continuous/134dB peak
Nominal Impedance	
Low	4 ohms
Mid/High	8 Ohms
Crossover Frequency	DSP Settings Provided
Transducers	
Low	LF 15" Woofer x 2
Mid	MF 8" Midrange x 2
High	HF PRD1000 Ribbon Driver
Input	Barrier Strips
Dims	60.9" H (154.7cm) 33" W (83.8cm) 16" D (40.6cm)
Enclosure	13 ply Baltic birch
Net Weight	180lbs.
Rigging	U-Bracket (included) for box to box attachment
Finish Options	Flat Black Latex

\*Due to product improvement research, SLS Audio reserves the right to make changes to existing products without notice.

1. A sine wave sweep is applied to a voltage level measured at the loudspeaker terminals corresponding to 1W@1M as referenced to the loudspeakers nominal impedance and the measuring distance. SPL is measured in an anechoic environment in the loudspeakers far field with the exception of subwoofers which are measured in half space. Sensitivity is determined by a Log/Log averaging method from 315Hz to 16kHz in the anechoic environment. Subwoofers use the same method with the half space measurement but within their specified operating bandwidth.

2. Averaged from 500Hz to 8kHz

3. AES established in accordance with AES/2-2012 standard.

### Description:

Consisting of (1)-CS300MH & (1)-CSB215, the Cinema System 300 is a full range, bi-amped screen channel cinema loudspeaker for medium sized auditoriums.

The System 300 high frequency section features a high performance PRD1000 planar ribbon transducer designed and manufactured by SLS Loudspeakers. The unique design and properties of the planar ribbon driver delivers fast transient accuracy as well as an exceptionally smooth high frequency response. Also the unique properties of the planer ribbon driver deliver more direct sound to the audience even with screen spreading.

The mid frequency section uses two high-efficiency 8" midrange drivers. They provide an open and clear sound despite loud listening levels.

The dual 15" bass enclosure compliments the powerful mid/high section with effortless bass reproduction.

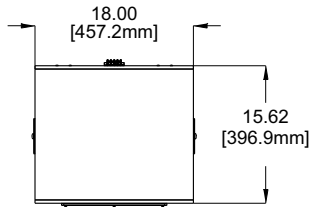


# SYS300

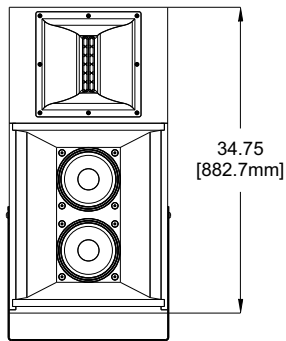
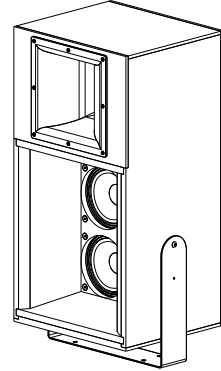
CINEMA SCREEN CHANNEL SPEAKER SYSTEM

SLS AUDIO A DIVISION OF DOLBY LABORATORIES 1650 W. JACKSON OZARK, MO 65721 417-323-7000

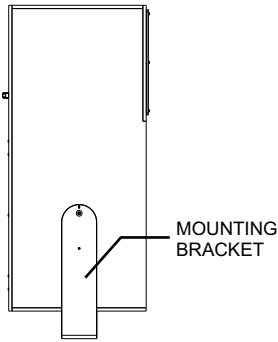
## TECH DATA SHEET



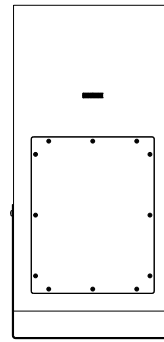
TOP



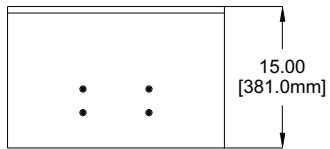
FRONT



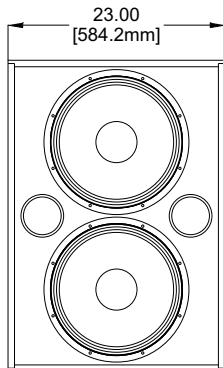
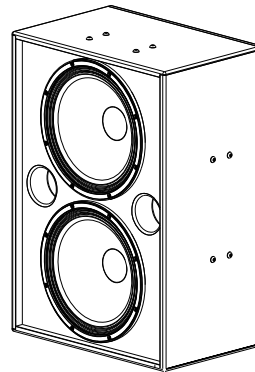
SIDE



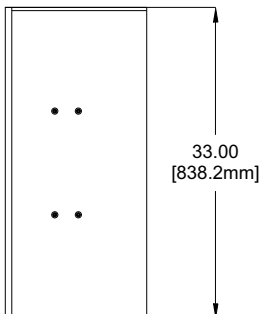
BACK



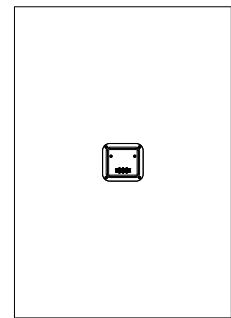
TOP



FRONT



SIDE



BACK